



HITZE SICHER WORMS

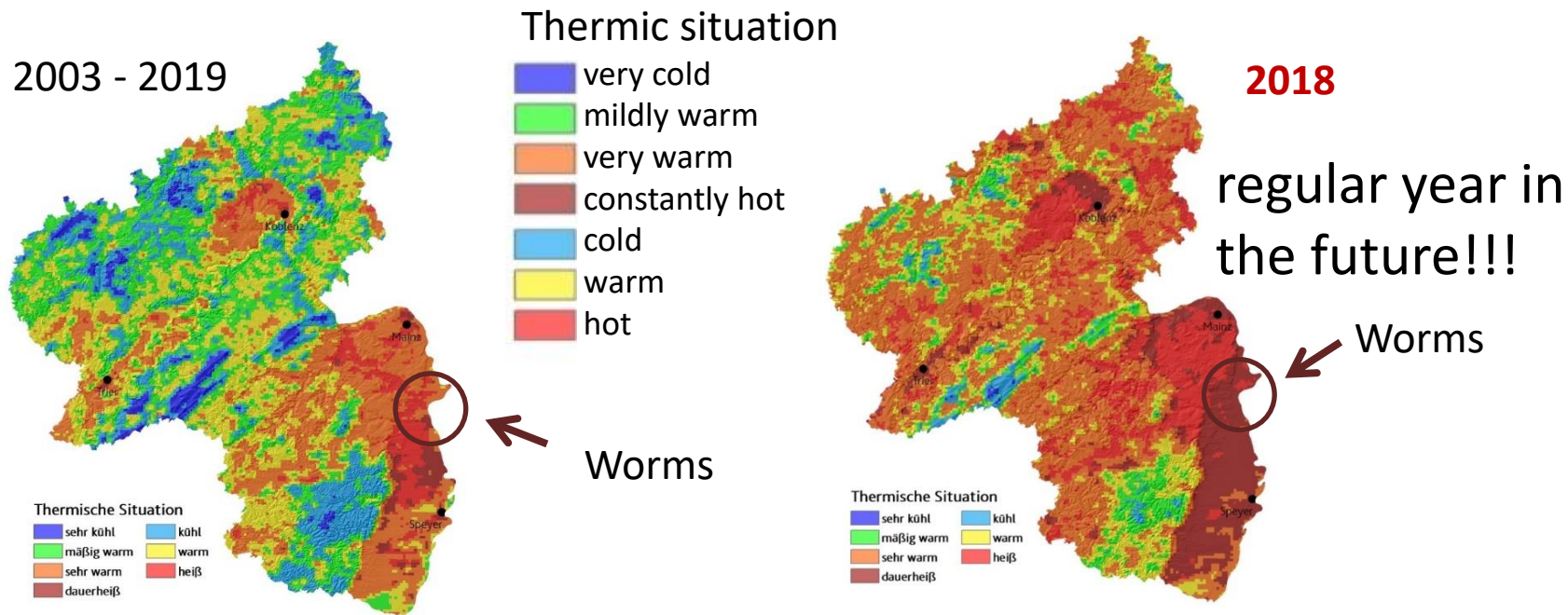
Gemeinsam handeln.

Project: Hitze Sicher/Worms

Develop and establish a heat action plan
for the city of Worms

WHY A HEAT ACTION PLAN?

Heat stress in Rhineland-Palatinate



© erstellt durch das Landesamt für Umwelt RLP (abgeleitet aus Satellitendaten)

Heat action plan for the city of worms

Measure from the concept for adaptation to climate change (2016)

Central target

Protection of the population and reduction of illness and mortality rates during high temperature phases

through short, medium and long-term strategies

- Special measures during acute heat periods
- Protection during the summer
- Preparation for summer
- Long-term development and planning



Konzept zur Anpassung an den Klimawandel



Juni 2016



PROJECT DESIGN

Project Hitze Sicher/Worms

- ✓ Implementation of a municipal pilot project in Worms
- ✓ Development of the plan with the support and expertise of external partners: Climate Alliance, university of Fulda and clinical centre of the university of Munich (LMU), Competence Centre for Climate Change Impacts of Rhineland-Palatinate.
- ✓ Duration: 24 months, Aug. 2020 - Jul. 2022
- ✓ Funded by the Federal Ministry of the Environment, Nature Conservation and Nuclear Safety (BMU)

Supported by:



Federal Ministry
for the Environment, Nature Conservation
and Nuclear Safety

based on a decision of the German Bundestag



Klima-Bündnis



LMU KLINIKUM

Gemeinsam. Fürsorglich. Wegweisend.



Hochschule Fulda
University of Applied Sciences

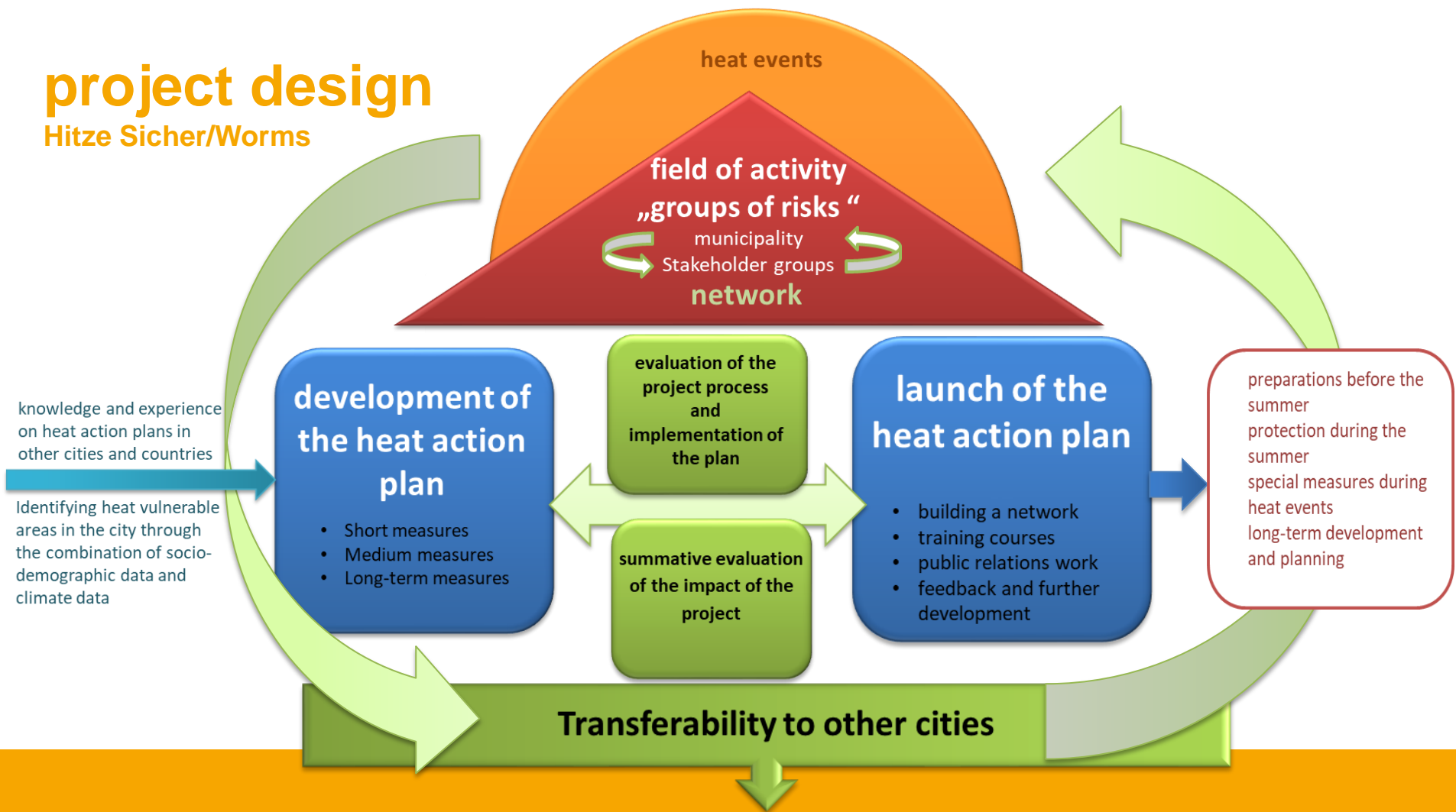


Rheinland-Pfalz

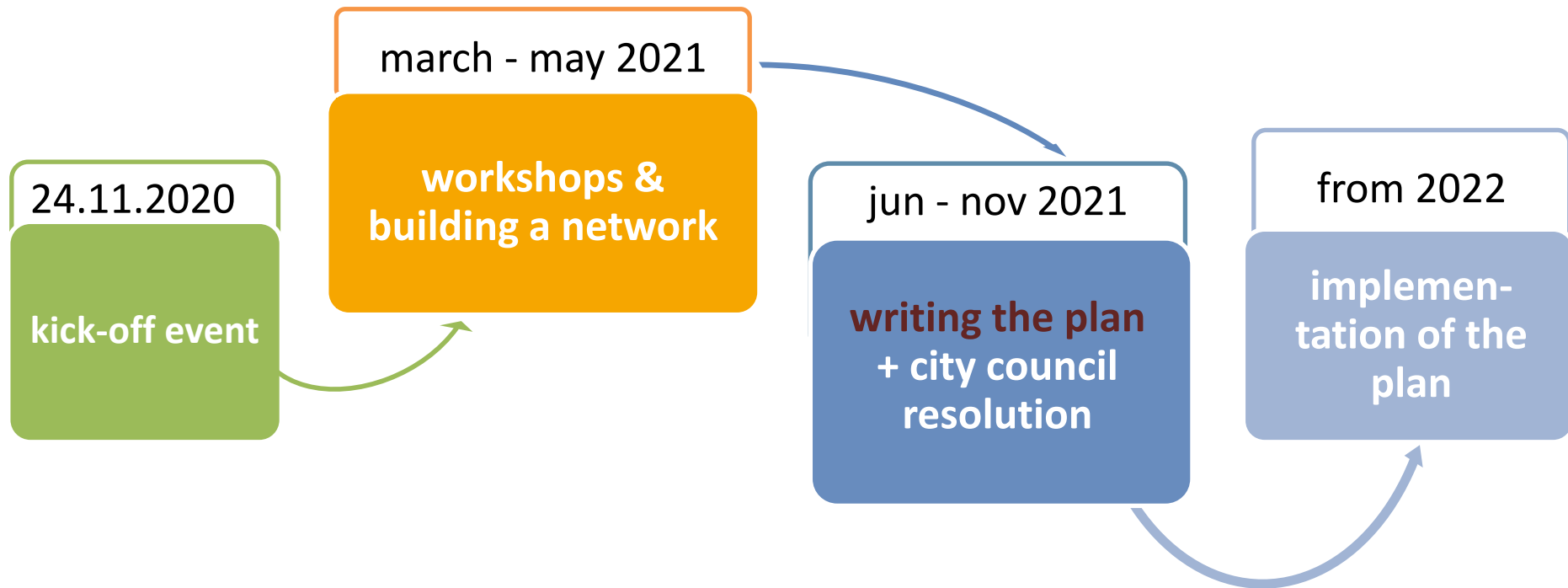
KOMPETENZZENTRUM
FÜR KLIMAWANDELFOLGEN

project design

Hitze Sicher/Worms



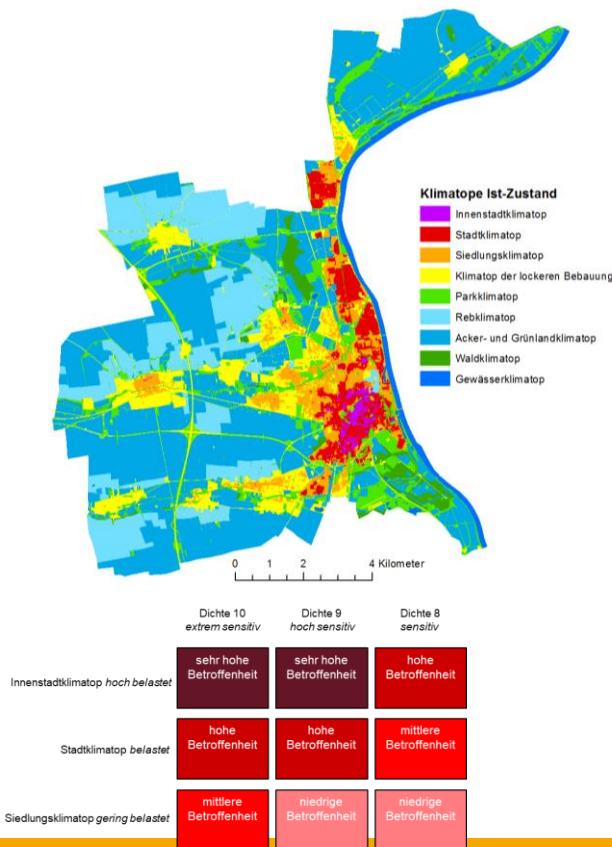
Heat action plan Worms – time schedule

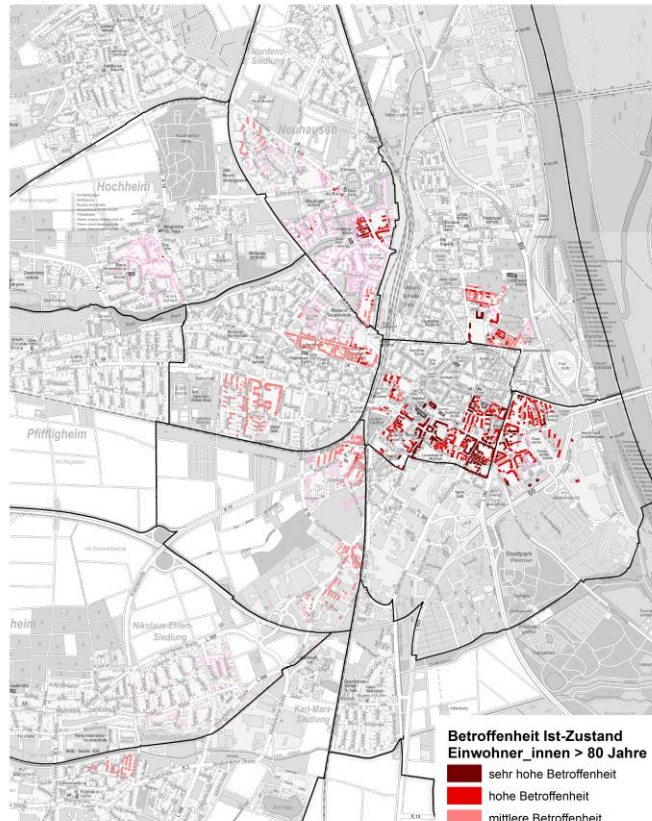


SOME PROJECT RESULTS

Identifying heat vulnerable areas

- Combining climate data with socio-demographic data
- Aim: show the vulnerability of certain groups
 - people over 65 years old
 - people over 80 years old
 - children from 0 to 5 years
 - recipients of unemployment benefit (SGBII)
 - geographical location of kindergartens and day nurseries
 - geographical location of nursing homes



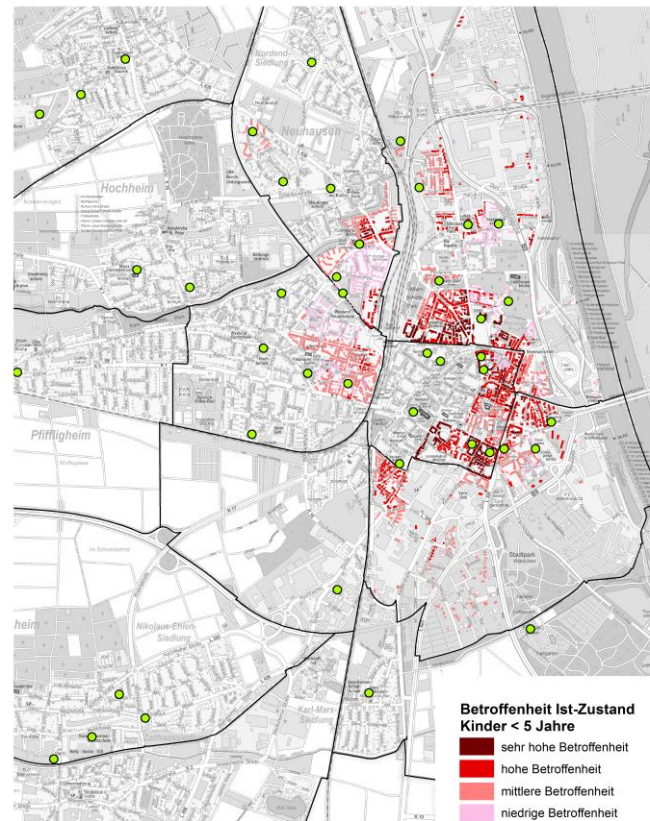


Datengrundlagen

Klimatopo: K PLAN
Wohngebäude: Stadt Worms
Altersstruktur (statistische Bezirke): Stadt Worms

Darstellung: Rheinland-Pfalz Kompetenzzentrum für Klimawandelfolgen

0 0,25 0,5 1 Kilometer



Datengrundlagen

Klimatopo: K PLAN
Wohngebäude: Stadt Worms
Altersstruktur (statistische Bezirke): Stadt Worms

Darstellung: Rheinland-Pfalz Kompetenzzentrum für Klimawandelfolgen

0 0,25 0,5 1 Kilometer

Stakeholder involvement – workshops

- 4 workshops á 2 meetings on target groups particularly affected by heat
 - Elderly people, physically and mentally vulnerable people, people in need of care
 - Pregnant women, babies and children
 - Community shelters and homeless people
 - People working outside
- Objectives
 - Practical needs-oriented preparation of the plan in close coordination with the sectoral and institutional stakeholders
 - Development of measures for the heat action plan
 - Forming a network with all relevant actors
 - Establishing communication structures

Conceptualising the plan – developing and defining concrete measures

- Three parts:
1. emergency plan
 2. short and medium-term measures
 3. long-term measures

1. emergency plan

- in which it is specified exactly what happens and what information is passed on to whom when a heat wave occurs
- different alarm levels: from 32 degrees, from 38 degrees, from 40 degrees

Conceptualising the plan – developing and defining concrete measures

2. short and medium-term measures

	target group	measure
A1	all people	Public communication of the acute heat alert incl. tips
A2	all people	Monitoring of morbidity
A3	all people	Drinking water in public spaces
A4	all people	Opening cool places (especially existing places like churches)
A5	people living alone	Support in everyday life - buddy system
A6	infants and parents	Expanding "early help" services for mothers and babies
A7	homeless people	Handing out heat protection items for homeless people
A8	community shelters	Measure for people in shared accommodation
M1	all people	Raising awareness through general broad publicity
M2	all people	Distribution of information material to multipliers
M3	caregivers	Education and training in the health sector and for other professional groups
M4	outdoors worker	Networking and advisory services for outdoor workers

Conceptualising the plan – developing and defining concrete measures

3. long-term measures

- measures for heat-adapted urban development



Structure within the municipality for the establishment of the plan

- Establish an internal municipal steering committee
 - consists of central municipal actors
 - meetings at regular intervals
 - to implement, adapt and further develop the heat action plan
 - discussing and prioritising measures
 - initiating and coordinating the successive implementation of the measures

HITZE SICHER WORMS

Gemeinsam handeln.

Questions?

thank you for the attention